

## SPECIFICATION

### Arc 5 Pro

|   |  |
|---|--|
| <b>TELESCOPE AND EDM</b>                                  |  |
| Length  | 154mm  |
| Objective Lens Diameter                                   | Telescope: 45mm Distance Meter: 50mm   |
| Magnification   | 30X  |
| Laser Dot Size  | A 20 m: 6mm x 9mm<br>A 50 m: 8mm x 20mm<br>A 100 m: 15mm x 26mm                        |
| Image   | Erect  |
| Field of View   | 1°30'  |
| Resolving Power   | 3"   |
| Mini. Focus   | 0.5 m  |
| <b>DISTANCE MEASUREMENT</b>                               |  |
| Single Prism  | 5,000m <sup>1</sup>  |
| Non-Prism   | 1,000m <sup>2</sup>  |
| Accuracy -Prism Mode                                      | ±(2mm+2ppm x D)m.s.e. <sup>3</sup>   |
| -Non-Prism Mode   | <500m: ±(2mm+2ppm x D)m.s.e. <sup>3</sup><br>>500m: ±(3mm+2ppm x D)m.s.e. <sup>3</sup> |
| Measuring Time  | Fine: 0.5s, Tracking: 0.2s <sup>4</sup>  |
| Meteorologic Correction                                   | Manual Input, Auto Correction  |
| Prism Constant  | Manual Input, Auto Correction  |
| On-side Shortcut  | Trigger key to make measurement more easily  |
| <b>ANGLE MEASUREMENT</b>                                  |  |
| Method  | Absolute Encoding  |
| Detecting System  | H: 2 sides, V: 2 sides   |
| Min. Reading  | 0.5°/1°/5°/10°   |
| Accuracy  | 2°   |
| Diameter of Circle  | 79mm   |
| Vertical Angle 0°   | Zenith 0°/Horizontal: 0°   |
| Unit  | 360°/400gon/6400mil  |
| <b>DISPLAY</b>  |  |
| Size  | 66mm X 42mm; 240*160 Dot Matrix  |
| No. of Display  | 2  |
| Keyboard  | 2 Alphanumeric Key   |
| <b>TILT CORRECTION</b>                                    |  |
| Tilt Sensor   | Dual Axis  |
| Method  | Liquid Electric  |
| Range   | ±4°  |
| Setting unit  | 1"   |
| <b>LEVEL SENSITIVITY</b>                                  |  |
| Plate Level   | 30"/2mm  |
| Circular Level  | 8"/2mm   |
| <b>OPTICAL PLUMMET (OPTIONAL: INTERNAL LASER PLUMMET)</b> |  |
| Image   | Erect  |
| Magnification   | 3X   |
| Focusing Range  | 0.3m ~ ∞   |
| Field of View   | 5°   |
| <b>DATA STORAGE &amp; INTERFACE</b>                       |  |
| Storage   | Internal Memory: 1GB; Max. Flashdrive USB max/256 GB supported                         |
| Data Interface  | SD-card/RS232C/ Bluetooth  |
| <b>GENERAL</b>  |  |
| Laser Class <sup>5</sup> -EDM                             | Class IIIA   |
| -Laser Plummet  | Class II   |
| Working Temperature                                       | -20°C to +50°C   |
| Battery Type  | Rechargeable Lithium Battery DC 7.4V   |
| Software for Data Collection                              | Eq. Topographic, GNSS, Marine Survey e 3D Laser Scanner                                |
| Working Time  | 25h  |
| Water & Dust Proof  | IP66   |

\*1. Good condition: No haze, visibility about 40km, overcast, no scintillation.

\*2. With Kodak Grey Card white side (90% reflectivity).

\*3. D stands for distance.

\*4. Typically, under good condition, non-prism measuring time may differ according to measuring target, observation situations, and environmental conditions.

\*5. According to FDA21 CFR Ch.1 §.1040.

## STANDARD PACKAGE COMPONENTS

Carrying Case X 1  
Charger X 1  
Battery X 2  
Rain Cover X 1  
Mini USB Cable X 1  
Carrying Belt X 2  
Plumb X 1  
Adjusting Pin X 1

Screw Driver X 1  
Wiping Cloth X 1  
Lens Cover X 1  
SD-Card X 1  
Multi-port Cable X 1  
Warranty Card X 1  
Reflecting Sheet X 1  
User Manual X 1

## OPTIONAL ACCESSORIES



**SANDING OPTIC-ELECTRICS INSTRUMENT CO.,LTD**  
Add: 7/F, No.39 Si Cheng Road, Tian He IBD Guangzhou  
510663, China  
Tel: +86-20-23380888 Fax: +86-20-23380800  
E-mail: export@sandinginstrument.com  
http://www.sandinginstrument.com

Dealer Info



## TOTAL STATION

### Arc 5 Pro

New 1000m Reflectorless EDM  
Flashdrive USB & Trigger Key

**SANDING**  
EVERY POINT MATTERS



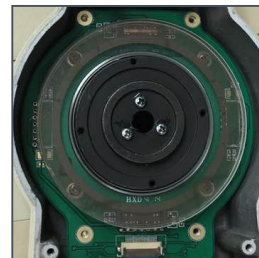
## DISTANCE MEASUREMENT

1000m reflectorless measuring range covers a most common scale in your field job. With a single prism, you can reach up to 5km quickly with 2mm+2ppm accuracy.



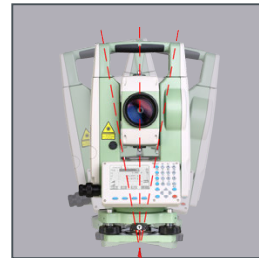
## ANGLE MEASUREMENT

Arc 5 Pro adopts an absolute encoding system, which does not require initialization by 0 set, and delivers a precise and stable angle measurement with up to 2" accuracy.



## TILT COMPENSATOR

The dual-axis tilt compensator monitors the inclination of both X and Y axes, and then correct the horizontal and vertical angle reading automatically.



## DISPLAY & TRIGGER KEY

A high definition graphic display with 8 lines and 2 sides of alphanumeric keyboards provides clear images and convenient operation. A global key allows you take measure in any screen.



## DATA EXCHANGE

With flashdrive port, users can export/import data more easily and directly. New Arc5 pro support max.256G USB storage.



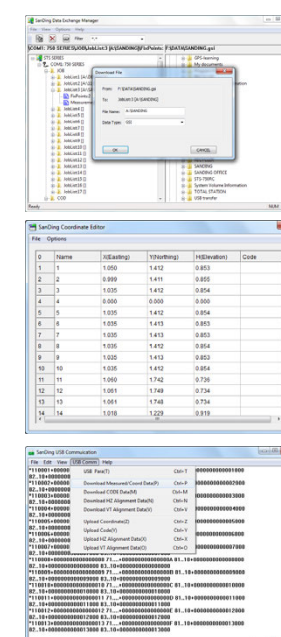
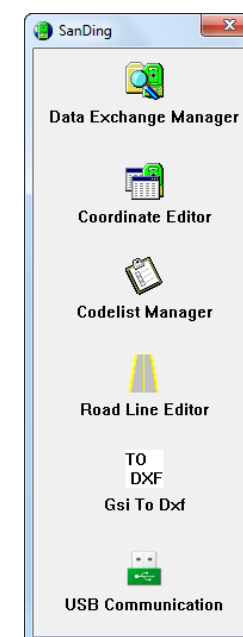
## ON-BOARD SOFTWARE & APPLICATIONS

Arc 5 Pro series is powered by a sophisticated on-board software which enables you to manipulate the total station effectively, like setting the compensation, COGO, data viewing and transfer, calibration, etc.

What's more, the on-board software also provides various essential applications on daily surveying job as below.



## SOFTWARE: SANDING PC TOOL

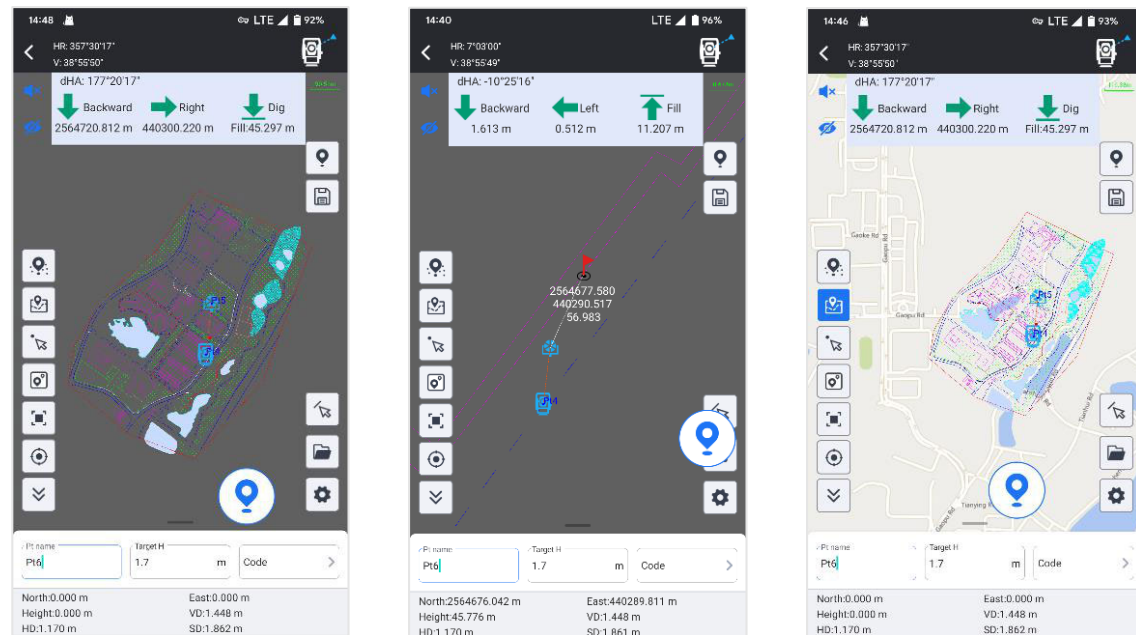


Powerful and convenient data transfer and post-processing software with concise and clear interface and user-friendly operation. User can download and upload raw data or coordinates in GSI format, edit coordinates and codes, design and edit road data, transfer GSI data to DXF file for processing in CAD, etc.



## Total Station Module of ARCSurv App: Four Main Features to Give You More Power & Freedom

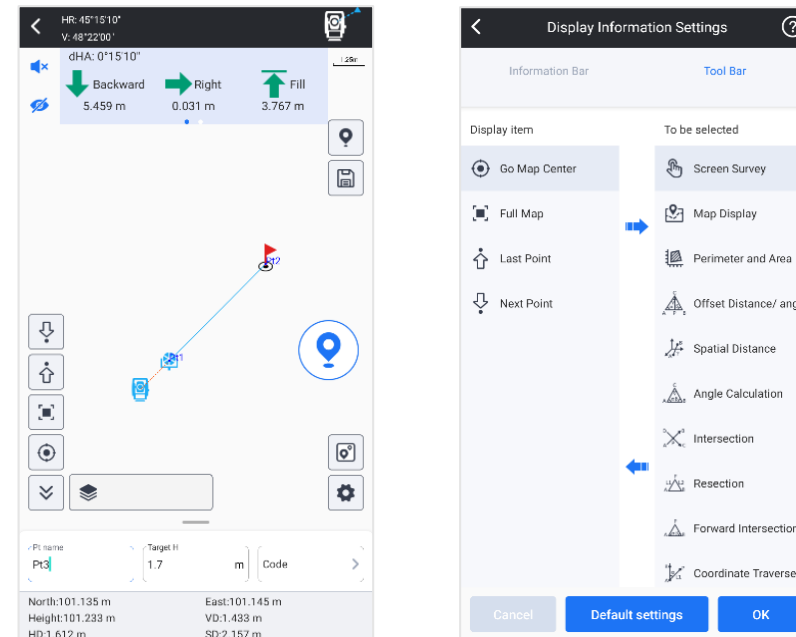
### CAD Stakeout: Increasing Productivity & Decreasing Error



CAD Stakeout allows you to import **CAD basemap** and stakeout it, without input point coordinates one by one.

When you need, you can connect to your local online map and overlap it to CAD basemap, to increase the precision of your job.

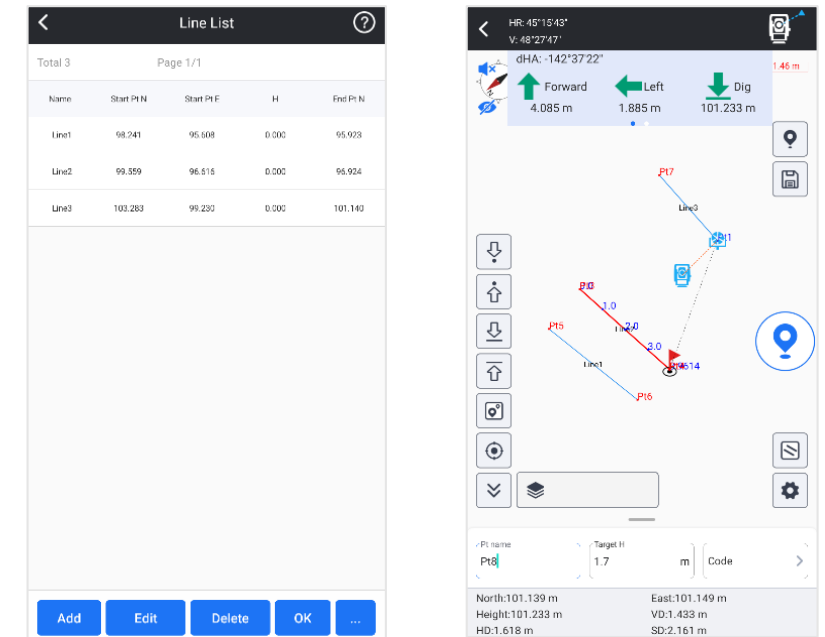
### Point Survey & Stakeout: More Ease and Convenience



With graphic display, now it is easy to you to observe the relation between occupied point and target points. It will help you to make less mistakes when measuring many points.

The stakeout program screen displays information more completely, indicates target points more intuitively, your workflow will be smoother than before.

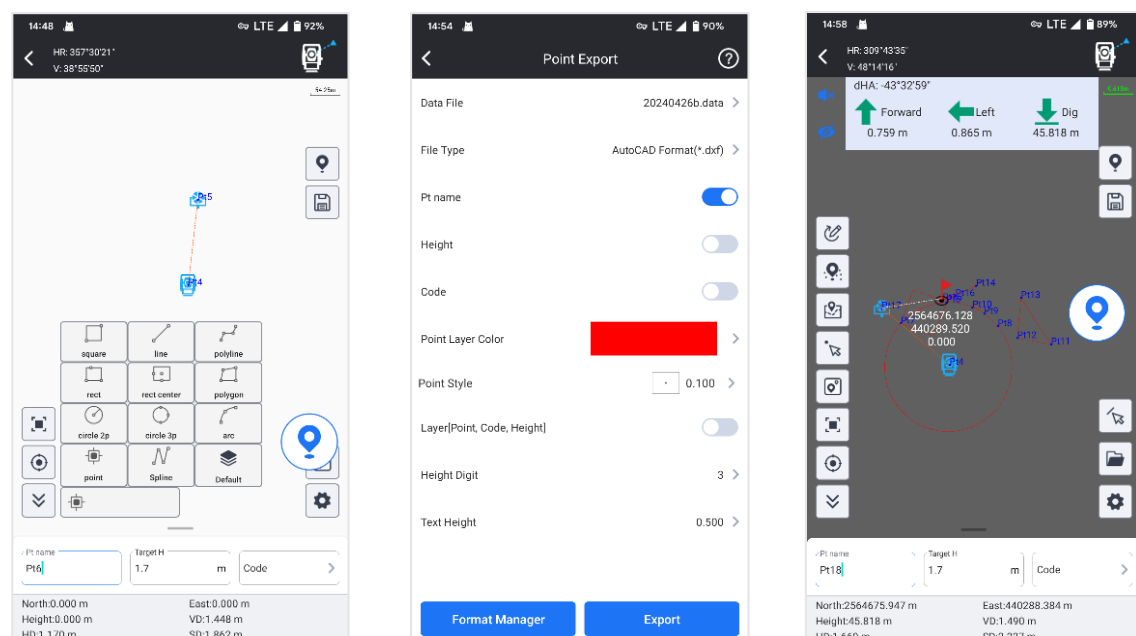
### Line Stakeout: Smarter than Traditional Way



User is allowed to manually choose points from library, line will be formed by program automatically. Then user input interval distance, setout points will be calculated out and displayed on screen.

This function is suitable for road or other objective that is containing lines.

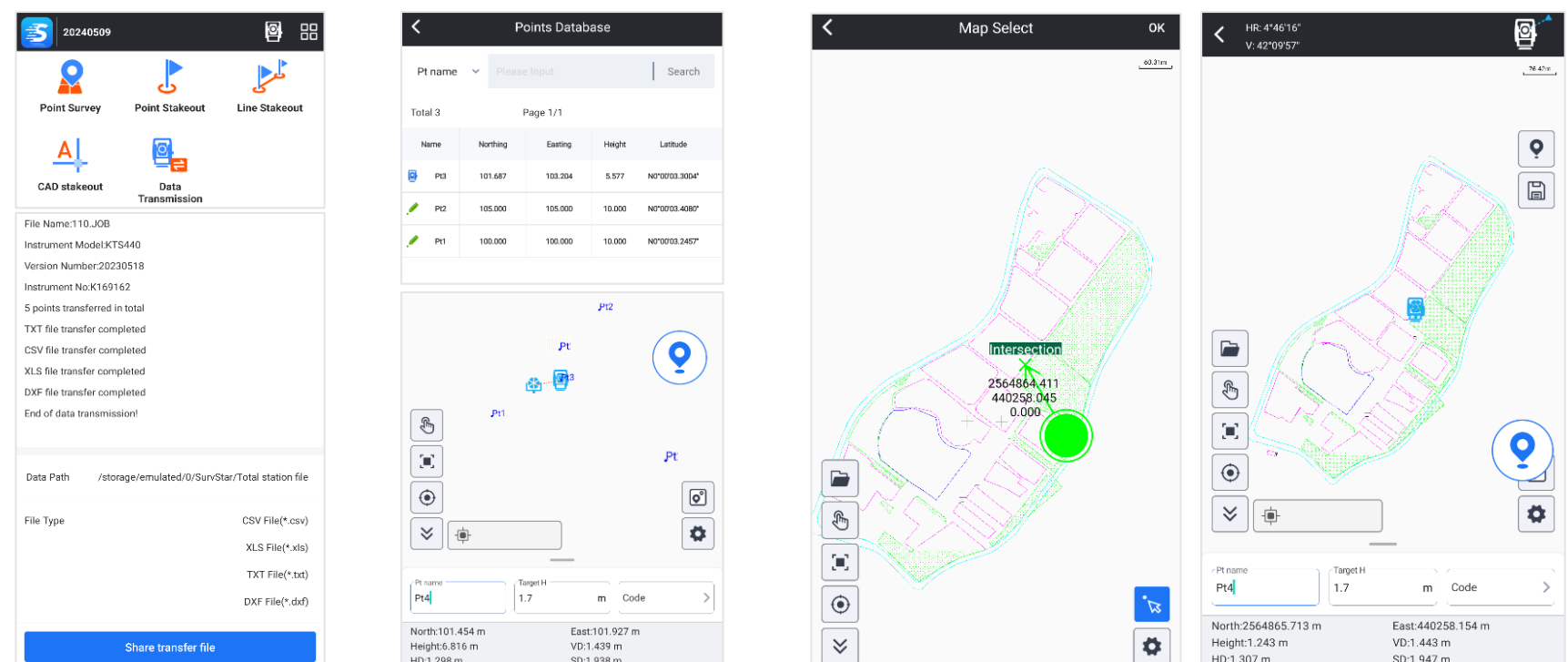
### Measure & Draw: Save Time in Both Field work and Indoor Work



User is allowed to draw line, polygon, circle...up to 11 kinds of graphic, while measuring target points. No need to manually draw draft map anymore.

User is allowed to manage different objectives as different layers. The draft map can be saved and output in CAD format, and to be used in indoor works.

### Other Features: More Innovation, No Limitation



Download & Share  
(.csv, .dxf, .txt, .xls)

Resection

Set Occupied Point from CAD basemap or Graphic Map

**Other Modules of ARCSurv App: GNSS, Marine Survey, 3D Laser Scanner...**